

A Remodeling Design with the Future in Mind.

Complete Makeover Earns Glickman Design Build
a 2017 NARI Contractor of the Year Award



A Dramatic Remodel

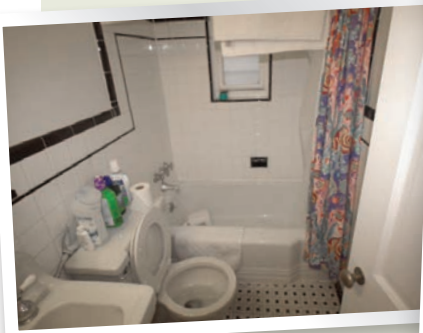
While these homeowners loved their neighborhood, their home lacked the functionality, modern amenities and design touches that they desired. And thinking toward the future, incorporating accessible amenities with a modern and beautiful look was also very important to them. A 1940's Cape Cod, the house was cramped and tight with narrow doorways and tight hallways. The décor was dated and lacked modern flare.

Based on the homeowners needs and desires, the goals for this CoTY 2017 award winning project were to add an overall modern and updated feel to the home both inside and out, add space, increase the flow and functionality of the existing space, create a first floor bedroom for single-level living, and create an accessible entry from the driveway to accommodate potential future needs.



BEFORE

The original rambler layout and design had charm, but the family grew tired of the small spaces and aging decor.



3D Renderings Revealed the Home's Possibilities



Rendering



Before

Left and Above: The backyard contained ample room to expand the footprint of the home. A rendering revealed how seamlessly the additional space could be integrated.

Spot-on: The living room rendering (below left) was a near perfect preview of how the actual space would ultimately look.



Rendering



After



After

Picture-perfect Results

On the exterior, curved dormers and a front portico add a modern flare. Because the front yard has a steep drop off to the street, an accessible entry in the front didn't make sense. Instead, a new rear ramp was created connecting the driveway to an accessible no-step entry. An addition off the back of the home with a clean, modern design provided ample room to navigate a wheelchair should the



need arise.

A new, open concept kitchen features open shelving for easy access and visibility, pull out drawers, ample workspace, and a raised oven. A Thermador induction cooktop was selected to avoid accidental burning of arms when reaching over the cooktop from a seated position. Front controls for a motorized vent allow for use from a seated position.

Above: The walk-in shower is a luxurious space for the homeowners to enjoy today, and its accessibility will be a well-appreciated asset as the couple ages.

15757 Crabbs Branch Way, Rockville, MD 20855
301.444.4663
www.GlickmanDesignBuild.com


Glickman
DESIGN | REMODEL | BUILD
& CREATIVE ACCESSIBLE SOLUTIONS